

MODEL 5073NS NovaStar Software

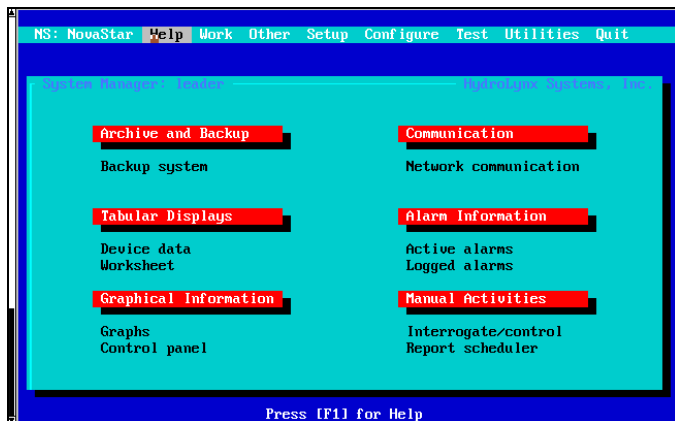
General Description

NovaStar Software from HydroLynx is a real-time data collection, alarm monitoring and control system. Its features include a user-friendly interface, multi-level password security, integrated data analysis, flexible report writing features, custom graphic drawing utilities, expandable open architecture for communication protocols, built-in control capability, and complete remote access including graphic screens.

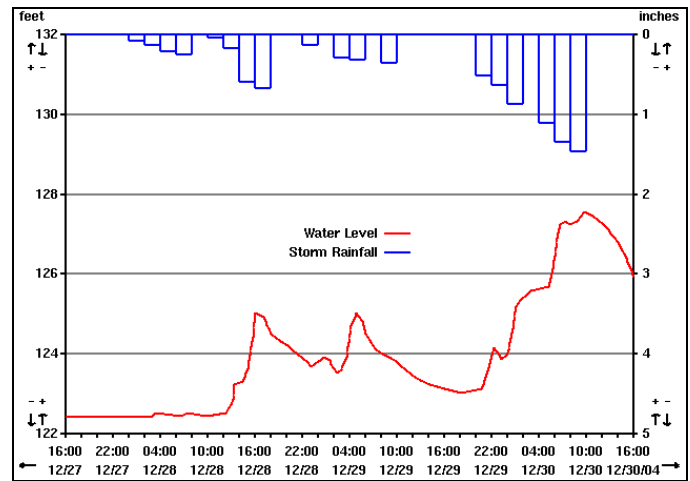
The NovaStar user interface uses pull-down menus and pop-up lists to simplify user access to system programs and database data. Online context sensitive help is available throughout the system. Data scrolling eliminates loss of data when scrolled off screen. Built in system configuration makes it unnecessary to leave the menu system and execute operating system commands.

Security is essential on systems that must stay operational 24 hours a day, provide information for public protection, and hold years of invaluable data in its database. When remote access is available through dial in modems, system security is essential. NovaStar provides 4 levels of password security. The lowest level allows data viewing only with no ability to change system setup or date. Higher access levels add increasing permission to modify the system and data. Different menus are used for each access level so a user cannot see what cannot be executed. Users cannot break out of the menu systems except at the highest level which prevents system harm from accidental program execution by typing mistakes or curious experimentation.

Integrated statistical data analysis is provided in NovaStar. Text and graphical report programs all get their data from the same data analysis engine. This ensures consistent data reporting throughout the system. Custom report writing is available and can be used to turn raw data into information that is ready for immediate distribution. Report automation makes and distributes reports unattended.



Model 5073NS4 NovaStar4 Software - Main Menu



Model 5073NS4X NovaStar 4X Software - Time Series Plot

Custom graphic screen can be drawn by the user or imported from other sources. Multi-layer graphical maps or schematics can be assembled by the user that are overlaid with data readouts. Data readouts display database information in text, bars, circles and trend charts. Commands can be executed from graphic screens for control panel applications. All graphics can be displayed on remote terminals using modems and HydroLynx's REMLYNX software. Graphics are also supported over local area networks (LANS).

NovaStar supports a wide variety of communication protocols. Remote modem access with high speed flow control is standard. LAN support is available. A LAN failover system maintains redundant databases on two LAN computers and does automatic failover if the primary system fails. Wide area networking (WAN) shares data, files, and messages between remote computer systems. WAN can use modems in leased line or dial-up, radio, or satellite communications. Bridging to other networks can be done with TCP/IP communication.

Control capability is available on text or graphic screens. Controls can be automated using the NovaStar Expert System Software.

NovaStar software is available in two versions: NovaStar 4 and NovaStar 4X. Both versions have the same database capability but offer different connectivity and user interface solutions.

NovaStar 4 runs under the QNX4 operating system. The QNX 4 operating system is POSIX compatible which allows easy source code porting of UNIX based programs. Command line programs and command arguments match other POSIX compatible UNIX systems. TCP/IP local area network (LAN) connectivity allows this system to connect with other office networked PC's.

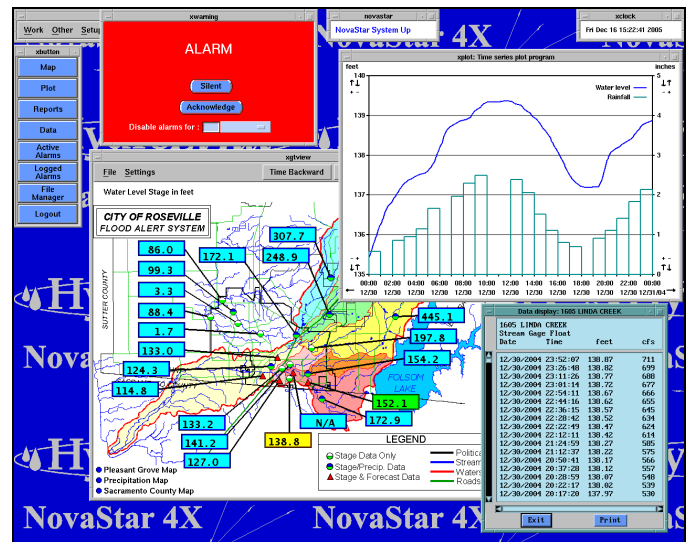
NovaStar 4X runs under the QNX4 operating system and the Xwindows graphical user interface (GUI). The Xwindows Motif GUI is a point and click graphical interface with a style similar to MS windows. However, the true multi-tasking capabilities of QNX4 allow multi-threaded programs to run simultaneously on mosaic windows. The Xwindows GUI is an industry standard LAN compatible interface. Users of other Xwindows LAN terminals running under different operating systems can still access NovaStar 4X screens.

Features

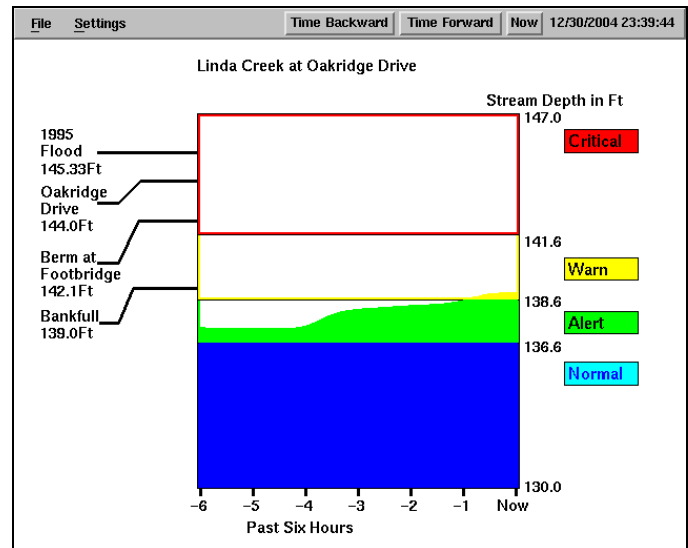
- On line context sensitive help
- Unlimited online data and time storage in database
- Database memory caching
- Pop-up/pull-down menus
- Menu customization
- Fully integrated data analysis
- Programmable data validation
- Data import with ASCII file reader
- Hot keys
- Password security with 4 levels
- User login accounting
- Mouse support
- Screen saver
- System configuration editors
- System task editors
- High speed modem support with flow control
- Entire database record can be edited
- Dot-Matrix, Laser & Postscript spooled printing
- Tape & removable disk backup
- Layered graphic screens with data readout
- Graphical trend charts
- Automated backup, archive and data purging
- Remote graphics access
- Bitmap and vector graphic screens
- Scrolling data displays
- Data compression
- Statistical analysis
- Custom report writing
- Real-time equations
- Automated reports
- Time based rating tables with shifts
- Multiple alarm criteria
- Custom alarm actions
- Command and report scheduler

Ordering Information

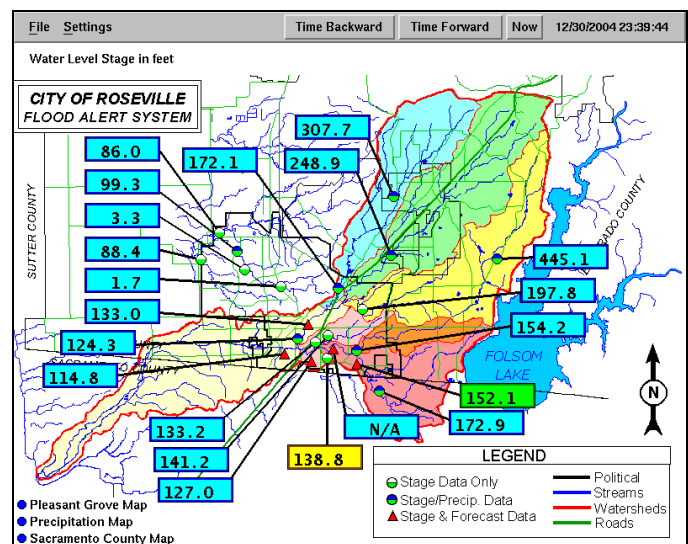
5073NS-4NovaStar 4 Software, with Manual
 5073NS-4XNovaStar 4X Software, with Manual
 5073NS-MNovaStar Software Manual
 5073NS-UP4X.....NovaStar 4 to NovaStar 4X Version Upgrade



Model 5073NS4X NovaStar 4X Desktop



User designed real-time data panel display



User designed real-time map display