

MODEL 5073FMD-PRO Field Maintenance Database Program

System Requirements

General Description

HydroLynx Model 5073FMD-Pro Field Maintenance Database Program (FMD-Pro) assists the ALERT system technician by documenting maintenance activities which include: site descriptions, inventory control and site visits. An important feature is the ease with which reports are generated using Microsoft Access.

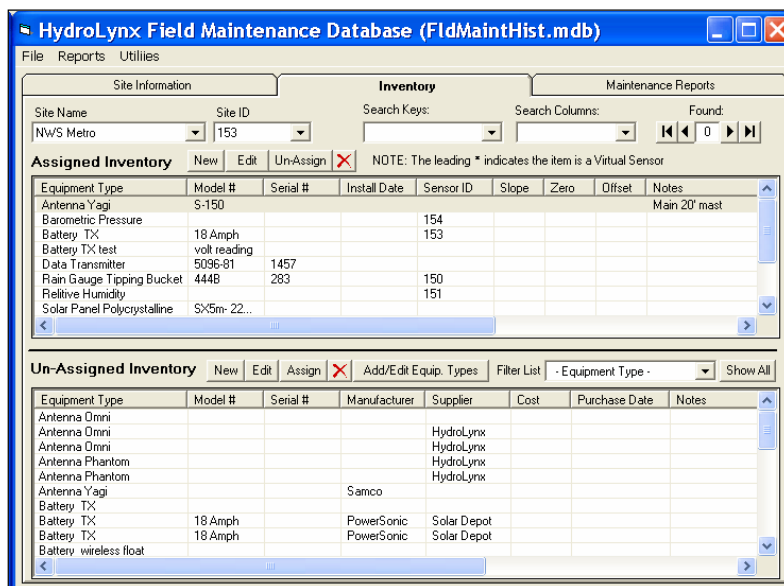
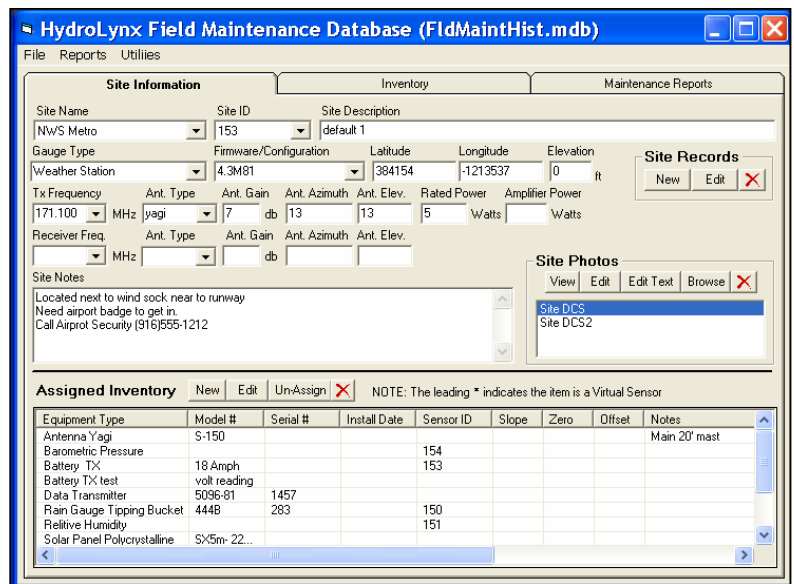
PC with a Pentium 75-megahertz (MHz) or higher processor
 Microsoft Windows[®] 95 or later operating system
 Microsoft Access 2000[®] or later
 16 megabytes (MB) of RAM for the operating system, plus an additional 8 MB of RAM for Access
 CD-ROM drive
 VGA- or higher-resolution monitor; Super VGA recommended
 Microsoft Mouse, Microsoft IntelliMouse[®], or compatible pointing device

The FMD-Pro program is a collection of tables grouped into three categories:

- Site Information
- Inventory
- Maintenance Reports

The program interface consists of three tab pages, one for each of the three categories. The tab pages are linked, so selecting a site on one page updates the information on all three pages. There are pop-up forms for adding and editing inventory items, equipment types, and site photos.

The **Site Information** tab page is divided into two sections. In the top section, the technician selects either the **Site Name** or **Site ID** to display the site information. **Site Records** are added, edited, or deleted in this section. The technician can add extensive **Site Notes**; such as directions, a notification list with names and phone numbers, and any concerns about the site. **Site Photos**, digital photos or images, can be attached to the site record. The bottom section contains the **Assigned Inventory** table.



The **Inventory** tab page keeps track of system equipment and is divided into two sections. The **Assigned Inventory** table is identical, both in content and function, to the table on the **Site Information** tab page. The technician can add a **New** item, **Edit** an existing item, **Un-Assign** an assigned item, or delete (**X**) an item the **Un-Assigned Inventory** table to the currently selected site's **Assigned Inventory** table. When an inventory item is added to an inventory table, it is linked to an equipment type. Equipment types are defined in a pop up window attached to the **Add/Edit Equip. Types** button. Once an equipment type is defined it is used for all inventory items of this type.