

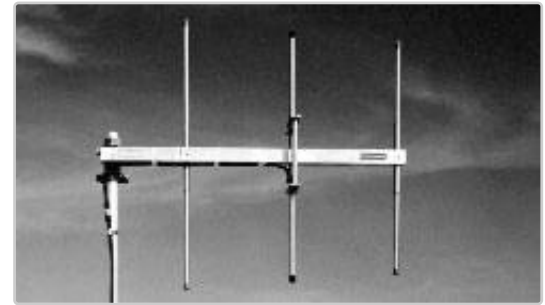


General Description

The antennas listed below are extremely rugged and fabricated of light-weight, high-strength aluminum alloys. All antennas listed are designed to survive 100 mph winds.

The Model 5050ANT Omni Directional Antenna is standard equipment in the HydroLynx packaged gauges, except the Model 50386P Packaged Repeater which requires a high-gain antenna. High-gain omni antennas are recommended for the central site and repeater receive antennas. Directional antennas may be used as receive antennas in some situations; horizontal beam width must be considered during radio path studies to ensure consistent reception.

The DB224, DB408 and DB420 antennas are supplied with clamps for top mounting. If top mounting is not feasible, heavy-duty side-mount kits are available that include all brackets, clamps, and hardware to mount the antenna to a tower leg.



Model DB224 receive and Model SAM-160 transmit antennas

Specifications

Model	Type	Gain	Length	Horiz. Beam	Connector
5050ANT	Omni (VHF/UHF)	0 dB	2 ft.	360°	UHF(F)
5050A	Omni (VHF/UHF)	3 dB	2 ft.	360°	UHF(F)
5050MBX-150	VHF Omni	3 dB	9.2 ft.	360°	UHF(F)
DB224	VHF Omni	6 dB	20 ft.	360°	N(M)
DB230	VHF Dir.	7 dB	3.5 ft.	76°	N(M)
DB408	UHF Omni	6.6 dB	9.5 ft.	360°	N(M)
DB420	UHF Omni	9.5 dB	18 ft.	360°	N(M)
DB436	UHF Dir.	10 dB	3 ft.	40°	N(M)
SAM-160	VHF Dir.	10 dB	4.5 ft.	60°	N(F)

Ordering Information

DB5001	Side Mount Kit for DB224
DB5012	Side Mount Kit for DB408 and DB420
DB365W	Wall or Wooden Pole Mounting Bracket